



NOVEMBER 2024



Tower Notes

The Salvation Army Angel Tree



Every child deserves to experience the joy of Christmas, and The Salvation Army's Angel Tree Program helps provide toys and gifts to needy children each year. You can be part of this heart-warming tradition by clicking **this link** to make a donation or choose a special gift to be sent directly to the Salvation Army warehouse. With just one click, you can brighten someone's holiday season.



Building Notes – Thanksgiving Holiday

The building will operate on a holiday schedule on Thursday, November 28th. Lighting and HVAC will only be available if requested. Please complete a work order through Prism by Tuesday, November 26th.

Housekeeping will also operate on a holiday schedule on November 28th. On Friday, November 29th, there will be a skeleton crew to maintain restrooms and kitchens. If your office is working on Friday, please let us know by calling 412.553.8800 or emailing deberle@winthropgh.com by Tuesday, November 26th, so that we can service your area. Housekeeping will return to its normal schedule on Monday, December 2nd.

Family Hospice Memorial Dove Tree

Honor a loved one in a unique way this holiday season, while supporting the region's leading nonprofit hospice provider, Family Hospice. Visit upmc.com/familyhospicedonate or call 412.639.4975 to make a donation. All proceeds benefit patients and their families throughout western Pennsylvania.

Be sure to visit the trees in the upper lobby by Starbucks from November 18th through January 3rd.



Positive Potatoes



Winthrop is on a mission to spread positivity and kindness throughout the building, one potato at a time. Keep an eye out for the hidden Positive Potatoes in the common areas — you never know where they might pop up! From the lobbies to The Hub, concourse and beyond, these little spuds are waiting to brighten your day. Once you find your Positive Potato, don't forget to share the love on our Facebook page and swing by The Hub to collect some potato chips! Let's make our community a little brighter together.



STEELFIT

Company of the Month

Congratulations to our company of the month, UPMC. We invite all UPMC employees at the tower to come in and enjoy:

- One private group/team-building workout
- Join with no initiation fee (a \$25 value)
- Any two nutrition products for \$4
- Two FREE Burn classes
- One FREE 30-minute PT session
- 1st Month Free

Did You Know?

Your SteelFit payments could be eligible for HSA/FSA reimbursement. Exercise is medicine and can often count for tax-free spending, saving an average of 30%. We are partnering with @truemedpayments who can help you navigate the intricacies of using your HSA/FSA funds for fitness-related expenses, making the reimbursement process seamless and hassle-free. If you have an HSA/FSA or plan to contribute for next year, click the link in their bio to see if you qualify.

EJ's Car Wash and Automotive Detailing

The tower provides a variety of convenient amenities, like garage parking and an on-site car detailing service, designed to make your life easier. EJ's Car Wash and Automotive Detailing is located on the Red Level of the tower's parking garage. If you book any Premium Service (starting at \$175), you'll also get complimentary parking for the day. Plus, this month, a new parking lease with SP Plus | A Metropolis Company (412.258.3560) includes a free Gold Car Wash.

Stay warm and stress-free while your car gets the care it deserves! For details call EJ at 412.491.2168.



The Pittsburgh Crèche

The annual blessing service and dedication of the 2024-2025 Pittsburgh Crèche is scheduled for Friday, November 22nd at 12 Noon. Join us on the plaza as we honor this Pittsburgh tradition.

The Pittsburgh Crèche is the world's only authorized replica of the Vatican's St. Peter's Square nativity scene. The Crèche will be on display through January 6th.

Despite all the donated services, approximately \$70,000 is needed annually to maintain the Crèche and house it when it is not on display. To make a donation, visit <https://pittsburghfoundation.org/donate>.

Hub Huddle

Join your fellow tenants for Hub Huddle on Wednesdays, from 2 to 3 pm in The Hub.

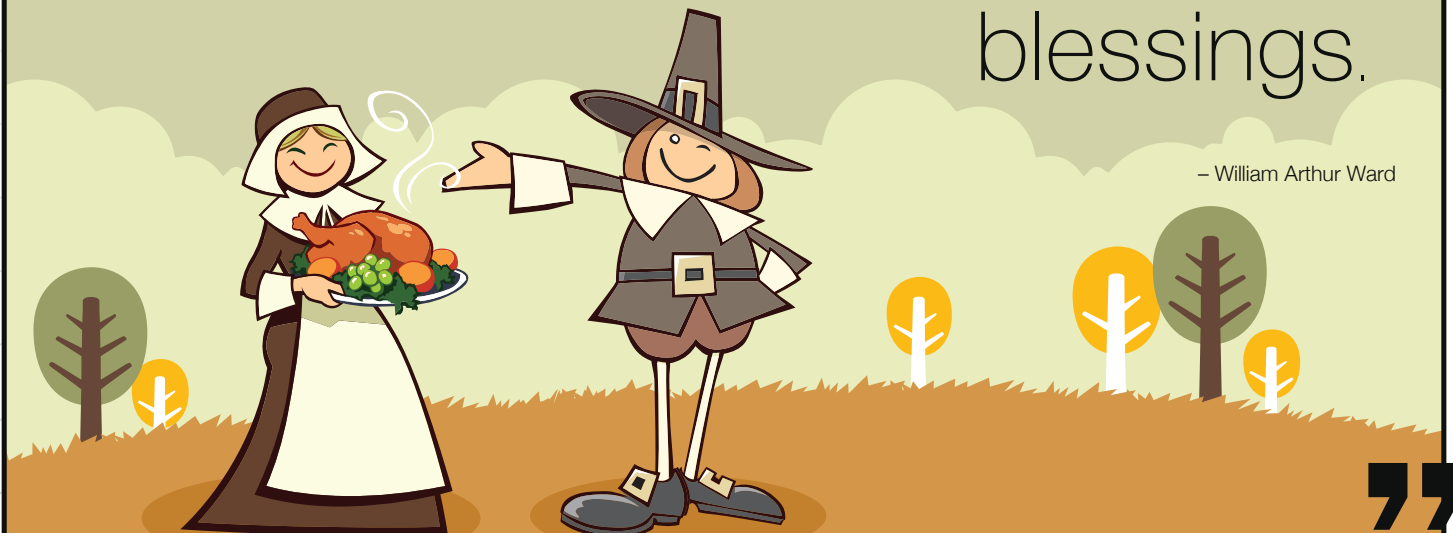
- November 6** – Caramel Apple Craze
- November 13** – Positive Potatoes
- November 20** – Nacho Average Bar
- November 27** – Popcorn Bar

“

Gratitude can transform common days into Thanksgivings,
turn routine jobs into joy and change ordinary opportunities into

blessings.

– William Arthur Ward



”